

ASU LEARNING ENTERPRISE

Sejal Learn + ASU RealmSpark

Accelerating Universal Learning Through
AI-Assembled Instructional Infrastructure




Transforming Knowledge into Scalable Learning Pathways

The Challenge

Content Overflow

Education no longer suffers from a lack of content. The digital era has democratized access to information at an unprecedented scale.

 Textbooks & Research

 Podcasts & Webinars

 Video Courses

The Gap

The core challenge is **transformation** - converting trusted knowledge into structured, measurable, and scalable learning pathways.

Transformational AI is the missing bridge.

Alignment With The ASU Learning Enterprise



Universal

Ensuring access to quality learning for everyone, everywhere.



Workforce

Accelerating skills for the modern economy.



Lifelong

Continuous education from K-12 to post-retirement.



Immersive

Pioneering XR and immersive learning tech.

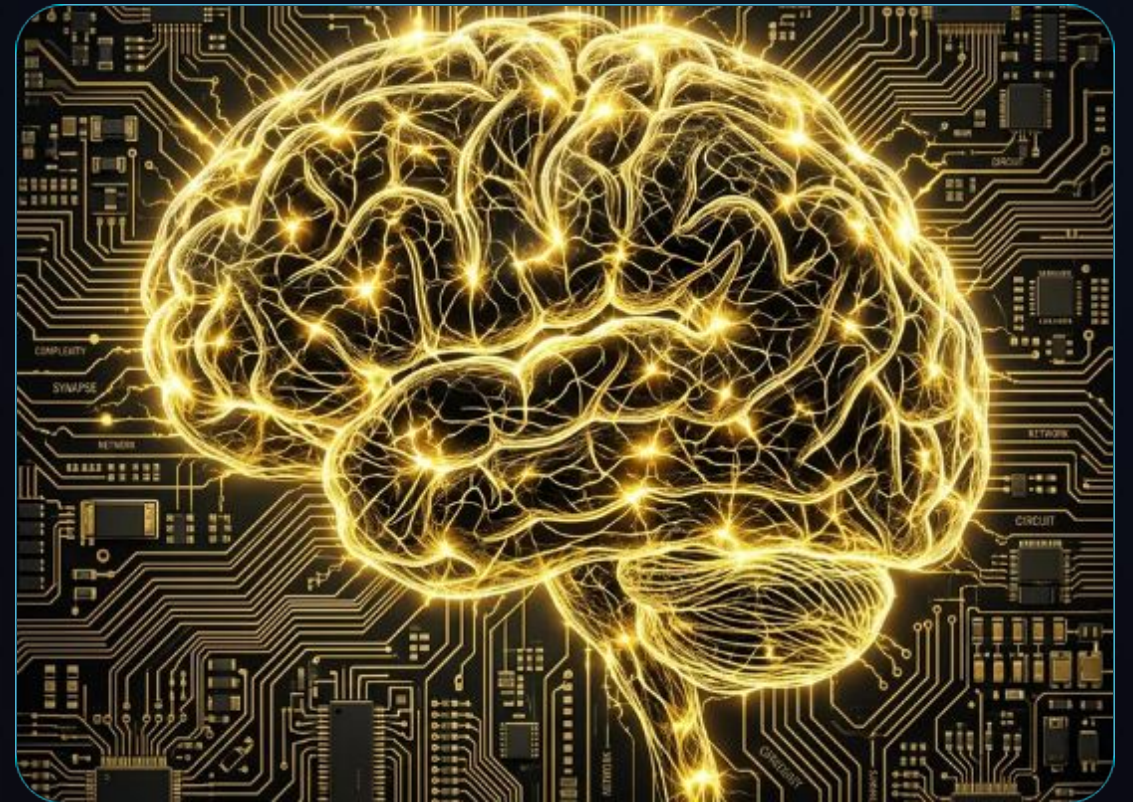
ASU Learning Enterprise: Reimagining the future of education.

RealmSpark Alignment

Scaling Innovation

RealmSpark serves as the catalyst for ASU's educational evolution, focusing on:

- ⚡ **Applied Innovation:** Testing what works in the real world.
- 🚀 **Venture Acceleration:** Supporting scalable EdTech solutions.
- 🛠️ **Human-Centered Design:** Converging tech and empathy.



What Sejal Learn Is



More than an LMS.

Sejal Learn is an **AI-assisted instructional Assembly** and learning pathway infrastructure layer.

It acts as the connective tissue between raw source knowledge and credentialed learning outcomes, removing the bottleneck of manual curriculum design.

Instructional Infrastructure



Source Knowledge

Webinars, Research, Books,
Podcasts

AI Structuring

Semantic mapping and content
chunking

Human Review

Expert verification and
refinement

Learning Pathways

Structured progression
systems

Credentials

Verified Badges &
Micro-credentials

Supports Professional Education Pathways

AI Literacy

Foundational fluency for K-20 educators.

Professional Development

Scalable professional learning ecosystems.

Innovation

Transforming pedagogy through tech.

Sejal converts publisher content and faculty expertise
into structured professional learning environments
for K-12 institutions, universities and workforce partners.





Supports Workforce Acceleration



Rapidly assembles pathways for the most critical domains in the modern economy.

As they emerge!

Supports Open Learning Systems

-  **Convert Fragmented Media:** Take open media ecosystems and turn them into structured progression systems.
-  **Learner Identity:** Connect learning to verified identities and portfolios.
-  **Assessment Integration:** Automated assessment generation from source material.
-  **Badge Ecosystems:** Seamlessly move from learning to micro-credentialing.

Supports Immersive Learning

The Curriculum Spine

Sejal provides the structural framework for immersive learning experiences. While XR environments provide the context, Sejal ensures the **educational outcomes** are met.

- ✔ Connecting XR to measurable results.
- ✔ Integration into wider learner pathways.



A Shared Vision

Building the infrastructure for continuously assembled
lifelong learning.

ASU RealmSpark

Visionary educational reach & venture leadership.

Sejal Learn

The AI-powered engine for rapid pathway assembly.

THANK YOU

Questions?

EXPLORE THE INFRASTRUCTURE FOR LIFELONG LEARNING

Sekhar Prabhakar | sekhar@sejal-learn.com